

Made in Korea

TIRON
Moving Forward

PORT / CONSTRUCTION / INDUSTRIAL PATTERN GUIDE

REACH STACKER / EMPTY CONTAINER HANDLER / RTGC
LOADER · DOZER / TIPPER · DUMP TRUCK / RIGID DUMPER / EXCAVATOR / GRADER
SKID STEER LOADER / BACKHOE LOADER / COMPACT LOADER / COMPACTOR / FORKLIFT



ISO 9001 | ISO 14001 | G-MARK



PATTERN GUIDE

PORT APPLICATION

REACH STACKER / EMPTY CONTAINER HANDLER / RTGC

CONSTRUCTION / INDUSTRIAL APPLICATION

LOADER · DOZER / TIPPER · DUMP TRUCK / RIGID DUMPER / EXCAVATOR / GRADER

SKID STEER LOADER / BACKHOE LOADER / COMPACT LOADER / COMPACTOR / FORKLIFT



ORIGINAL EQUIPMENT (OVERSEAS)

 TADANO
  TAKEUCHI
  HITACHI
  JOHN DEERE

 Kubota
  YANMAR
  LOVOL
  DELTA
Rah Machine
  SHAKTIMAN[®]
MAKING AGRICULTURE MORE ECONOMIC

ORIGINAL EQUIPMENT (DOMESTIC)

 HYUNDAI
CONSTRUCTION EQUIPMENT
  DOOSAN
 Doosan Heavy Industries & Construction
  VOLVO
VOLVO CONSTRUCTION EQUIPMENT

 CLARK
  LS Mtron
  daedong
  KIOTI
  DK KUKJE MACHINERY
  Branson
MACHINERY

 TYM TONG YANG CO., LTD
  Hankook
driving emotion
  KUMHO TIRE
  DAR
Defense Acquisition Program Administration
 

PORT APPLICATION

REACH STACKER

EMPTY CONTAINER HANDLER

RTGC

INDEX

REACH STACKER	673	08
	660	08
	670	08
	407	09
	640S	09
EMPTY CONTAINER HANDLER	660	10
	664	10
RTGC	674	11
	661	11
	407	11





REACH STACKER



STABILITY



HIGH LOAD CAPACITY

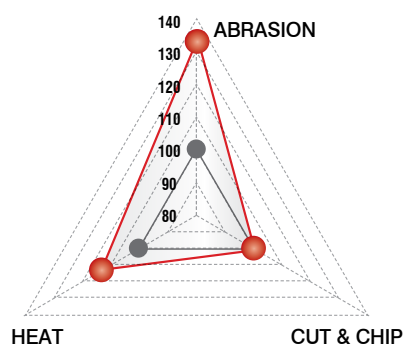
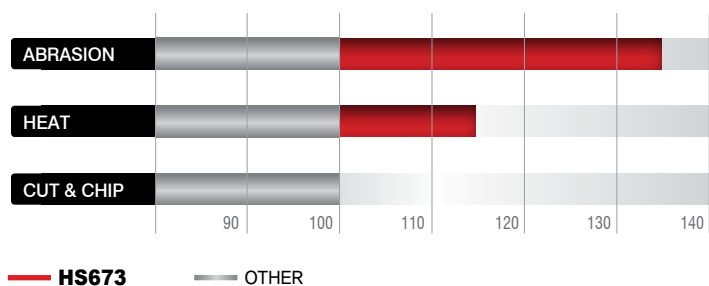


DURABILITY

HS673

OUTSTANDING
PERFORMANCE EXCLUSIVELY
PORT EQUIPMENT

PERFORMANCE RESULT

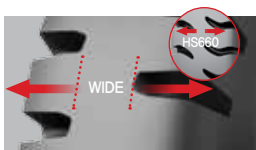


ABRASION RESISTANCE **35%** higher relative performance compared to competitors

HEAT RESISTANCE **15%** higher relative performance compared to competitors

TECHNOLOGY

OPTIMUM GROOVE DESIGN



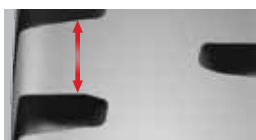
Applying a shortened groove length & a lug pattern at a 90-degree angle to minimize block distortion

TIE-BAR DESIGN

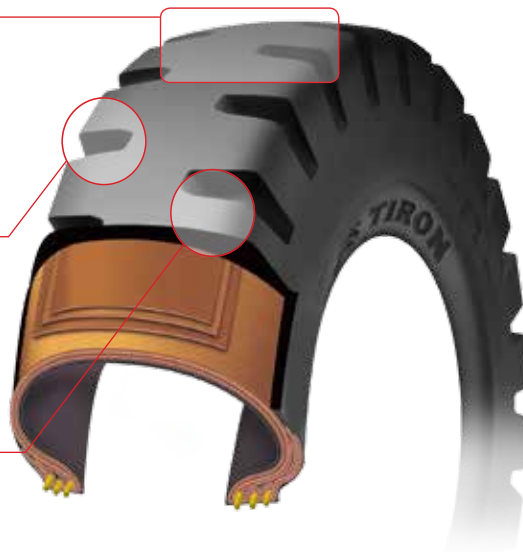


Applying a Tie-Bar to prevent block distortion & groove crack

ENHANCED BLOCK RIGIDITY



Increased space between blocks provides optimum block rigidity





REACH STACKER

673

660

670



> REACH STACKER

673

SIZE	PR	TUBE TYPE	TRA CODE	SPEED	R.W.	O.D.		S.W.		TREAD DEPTH		MAX.LOAD		INFLATION	
						mm	inch	mm	inch	mm	x/32"	kg	lbs	kg/cm ²	psi
18.00-25	40	T/L	IND-4	10km/h	13.00	1690	66.5	500	19.7	63.0	79.4	22950	50600	10.00	145

660

SIZE	PR	TUBE TYPE	TRA CODE	SPEED	R.W.	O.D.		S.W.		TREAD DEPTH		MAX.LOAD		INFLATION	
						mm	inch	mm	inch	mm	x/32"	kg	lbs	kg/cm ²	psi
18.00-25	40	T/L	IND-4	10km/h	13.00	1690	66.5	510	20.1	65.0	81.9	22950	50600	10.00	145

670

SIZE	PR	TUBE TYPE	TRA CODE	SPEED	R.W.	O.D.		S.W.		TREAD DEPTH		MAX.LOAD		INFLATION	
						mm	inch	mm	inch	mm	x/32"	kg	lbs	kg/cm ²	psi
18.00-33	40	T/L	IND-4	10km/h	13.00	1870	73.6	510	20.1	61.0	76.9	24975	55060	10.00	145

TT = TUBE TYPE / TL = TUBELESS



407



640S



407

SIZE	PR	TUBE TYPE	TRA CODE	SPEED	R.W.	O.D.		S.W.		TREAD DEPTH		MAX.LOAD		INFLATION	
						mm	inch	mm	inch	mm	x/32"	kg	lbs	kg/cm ²	psi
18.00-25	40	T/L	IND-3	10km/h	13.00	1627	64.1	510	20.1	39.0	49.1	22950	50600	10.00	145
18.00-33	40	T/L	IND-4	10km/h	13.00	1868	73.5	503	19.8	58.0	73.1	24975	55060	10.00	145

640S

SIZE	PR	TUBE TYPE	TRA CODE	SPEED	R.W.	O.D.		S.W.		TREAD DEPTH		MAX.LOAD		INFLATION	
						mm	inch	mm	inch	mm	x/32"	kg	lbs	kg/cm ²	psi
18.00-25	40	T/L	IND-4S	10km/h	13.00	1660	65.4	515	20.3	59.0	74.3	22950	50600	10.00	145

*LOAD CAPACITY

TIRE SIZE	PR	ROAD CONDITION	Speed(km/hr)	Static	1	5	10	15	20	25	INFLATION	
					kg	kg	kg	kg	kg	kg	kg/cm ²	psi
18.00-25	40	Hard Improved Surface	Max. Load(kg)	30600	27200	24650	22950	22100	21590	21250	10.00	145
18.00-33	40	Hard Improved Surface	Max. Load(kg)	33300	29600	26825	24975	24050	23495	23125	10.00	145

TT = TUBE TYPE / TL = TUBELESS



EMPTY CONTAINER HANDLER

660

664



> EMPTY CONTAINER HANDLER

660

SIZE	PR	TUBE TYPE	TRA CODE	SPEED	R.W.	O.D.		S.W.		TREAD DEPTH		MAX.LOAD		INFLATION	
						mm	inch	mm	inch	mm	x/32"	kg	lbs	kg/cm ²	psi
14.00-24	28	T/L	IND-4	10km/h	10.00	1413	55.6	391	15.4	50.0	63.0	13500	29760	10.00	145
	32	T/L	IND-4	10km/h	10.00	1413	55.6	391	15.4	50.0	63.0	14175	31200	10.00	145

664

SIZE	PR	TUBE TYPE	TRA CODE	SPEED	R.W.	O.D.		S.W.		TREAD DEPTH		MAX.LOAD		INFLATION	
						mm	inch	mm	inch	mm	x/32"	kg	lbs	kg/cm ²	psi
12.00-20	28	T/T	IND-4	10km/h	8.50	1135	44.7	314	12.4	45.0	56.7	10400	22930	10.00	145
12.00-24	20	T/T	IND-4	10km/h	8.50	1275	50.2	330	13.0	55.0	69.3	9315	20540	10.00	145
	24	T/T	IND-4	10km/h	8.50	1275	50.2	330	13.0	55.0	69.3	9650	21270	10.00	145

TT = TUBE TYPE / TL = TUBELESS



RTGC

674

661

407



NEW



> **RTGC**

674

SIZE	PR	TUBE TYPE	TRA CODE	SPEED	R.W.	O.D.		S.W.		TREAD DEPTH		MAX.LOAD		INFLATION	
						mm	inch	mm	inch	mm	x/32"	kg	lbs	kg/cm ²	psi
21.00-25	40	T/L	IND-3	10km/h	15.00	1750	68.9	575	22.6	41.0	51.7	27000	59500	10.00	145

661

SIZE	PR	TUBE TYPE	TRA CODE	SPEED	R.W.	O.D.		S.W.		TREAD DEPTH		MAX.LOAD		INFLATION	
						mm	inch	mm	inch	mm	x/32"	kg	lbs	kg/cm ²	psi
16.00-25	32	T/L	IND-3	10km/h	11.25	1493	58.8	445	17.5	34.0	42.8	16875	37200	10.00	145
21.00-25	40	T/L	IND-3	10km/h	15.00	1750	68.9	584	23.0	41.0	51.7	27000	59500	10.00	145

407

SIZE	PR	TUBE TYPE	TRA CODE	SPEED	R.W.	O.D.		S.W.		TREAD DEPTH		MAX.LOAD		INFLATION	
						mm	inch	mm	inch	mm	x/32"	kg	lbs	kg/cm ²	psi
16.00-25	32	T/L	IND-3	10km/h	11.25	1502	59.1	445	17.5	34.0	42.8	16875	37200	10.00	145
21.00-25	36	T/L	IND-3	10km/h	15.00	1738	68.4	576	22.7	40.0	50.4	24900	54900	9.20	131
	40	T/L	IND-3	10km/h	15.00	1738	68.4	576	22.7	40.0	50.4	27000	59500	10.00	145

***LOAD CAPACITY**

TIRE SIZE	PR	ROAD CONDITION	Speed(km/hr)	Static	1	5	10	15	20	25	INFLATION	
					kg	kg	kg	kg	kg	kg	kg/cm ²	psi
16.00-25	32	Hard Improved Surface	Max. Load(kg)	22500	20000	18125	16875	16250	15875	15625	10.00	145
21.00-25	40	Hard Improved Surface	Max. Load(kg)	36000	32000	29000	27000	26000	25400	25000	10.00	145

TT = TUBE TYPE / TL = TUBELESS

PORT APPLICATION
EMPTY CONTAINER HANDLER / RTGC

CONSTRUCTION / INDUSTRIAL APPLICATION

LOADER · DOZER / TIPPER · DUMP TRUCK / RIGID DUMPER
EXCAVATOR / GRADER / SKID STEER LOADER / BACKHOE LOADER
COMPACT LOADER / COMPACTOR / FORKLIFT



INDEX

LOADER · DOZER	674	16
	665	16
	651	16
	655	17
	432	17
	640S	17
	641S	18
	405B	18
TIPPER · DUMP TRUCK	669	18
RIGID DUMPER	407	19
	ML	19
	660	19
EXCAVATOR	676	20
	653	20
	T2A	20
	423	20
GRADER	407	21
	405B	21
SKID STEER LOADER	675	22
	610	22
	656	22
	667	23
	405B	23
	Q	23
BACKHOE LOADER	668	24
	651	24
	610	24
COMPACT LOADER	668	25
COMPACTOR	DM	25
	663S	25
	RR4	25
FORKLIFT	707	28
	701	28
	704	29
	708	30
	T14	30
	354A	31
	705	32
	709	32
	431	32
	654	33



SHOCK ABSORPTION



HIGH LOAD CAPACITY

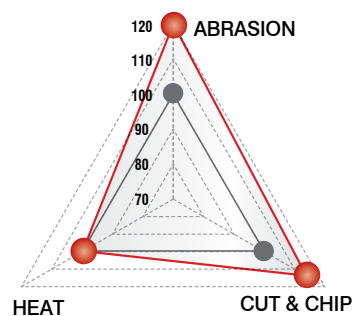
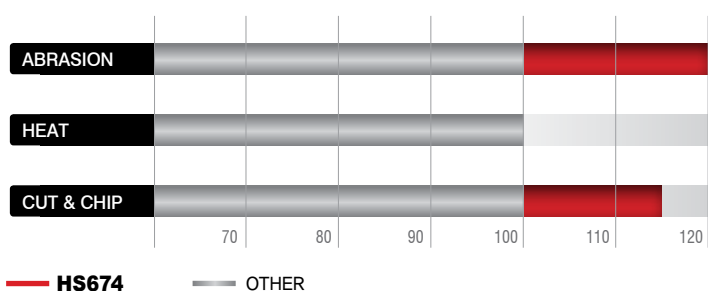


DURABILITY

HS674

OUTSTANDING
PERFORMANCE EXCLUSIVELY
**HEAVY CONSTRUCTION
EQUIPMENT**

PERFORMANCE RESULT



ABRASION RESISTANCE **20%** higher relative performance compared to competitors

CUT & CHIP RESISTANCE **14%** higher relative performance compared to competitors

TECHNOLOGY

OPTIMIZED PATTERN DESIGN



Increased tread contact area & pattern design for more evenly distributed load contribute to high mileage

DISTRIBUTION OF SIDEWALL STRESS

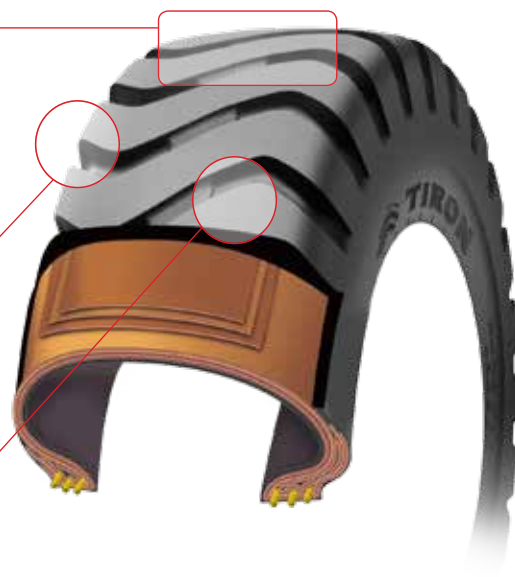


Advanced profile with a good distribution of sidewall stress provides high mileage

EXCLUSIVE COMPOUND



Optimized compounds for Construction field provide high mileage & outstanding performance





LOADER · DOZER

674

665

651



NEW



> LOADER · DOZER

674

SIZE	PR	TUBE TYPE	TRA CODE	One Way Distance	SPEED	R.W.	O.D.		S.W.		TREAD DEPTH		MAX.LOAD		INFLATION	
							mm	inch	mm	inch	mm	x/32"	kg	lbs	kg/cm ²	psi
17.5-25	16	T/L	L-3	76m	10km/h	14.00	1350	53.1	435	17.1	27.0	34.0	7300	16090	4.75	68
	20	T/L	L-3	76m	10km/h	14.00	1350	53.1	435	17.1	27.0	34.0	8250	18190	5.75	82
	24	T/L	L-3	76m	10km/h	14.00	1350	53.1	435	17.1	27.0	34.0	8800	19400	6.50	92
20.5-25	16	T/L	L-3	76m	10km/h	17.00	1495	58.9	510	20.1	29.0	36.5	8250	18190	3.50	50
	20	T/L	L-3	76m	10km/h	17.00	1495	58.9	510	20.1	29.0	36.5	9500	20940	4.50	64
	24	T/L	L-3	76m	10km/h	17.00	1495	58.9	510	20.1	29.0	36.5	10300	22710	5.25	75
23.5-25	20	T/L	L-3	76m	10km/h	19.50	1617	63.7	590	23.2	33.0	41.6	10900	24030	3.75	53
	24	T/L	L-3	76m	10km/h	19.50	1617	63.7	590	23.2	33.0	41.6	12500	27560	4.75	68
	32	T/L	L-3	76m	10km/h	19.50	1617	63.7	590	23.2	33.0	41.6	14700	32410	6.25	89
26.5-25	36	T/L	L-3	76m	10km/h	19.50	1617	63.7	590	23.2	33.0	41.6	15700	34610	7.00	100
	28	T/L	L-3	76m	10km/h	22.00	1750	68.9	680	26.8	37.0	46.6	15500	34170	4.75	68
29.5-25	32	T/L	L-3	76m	10km/h	22.00	1750	68.9	680	26.8	37.0	46.6	17000	37480	5.50	78
	28	T/L	L-3	76m	10km/h	25.00	1865	73.4	760	29.9	39.0	49.1	17500	38580	4.25	60
29.5-25	34	T/L	L-3	76m	10km/h	25.00	1865	73.4	760	29.9	39.0	49.1	20000	44090	5.25	75

665

SIZE	PR	TUBE TYPE	TRA CODE	One Way Distance	SPEED	R.W.	O.D.		S.W.		TREAD DEPTH		MAX.LOAD		INFLATION	
							mm	inch	mm	inch	mm	x/32"	kg	lbs	kg/cm ²	psi
26.5-25	28	T/L	L-4	76m	10km/h	22.00	1798	70.8	688	27.1	63.0	79.4	15500	34170	4.80	67
	32	T/L	L-4	76m	10km/h	22.00	1798	70.8	688	27.1	63.0	79.4	17000	37480	5.50	78
29.5-25	28	T/L	L-4	76m	10km/h	25.00	1912	75.3	780	30.7	65.0	81.9	17500	38580	4.30	60
	34	T/L	L-4	76m	10km/h	25.00	1912	75.3	780	30.7	65.0	81.9	20000	44090	5.30	75

651

SIZE	PR	TUBE TYPE	TRA CODE	One Way Distance	SPEED	R.W.	O.D.		S.W.		TREAD DEPTH		MAX.LOAD		INFLATION	
							mm	inch	mm	inch	mm	x/32"	kg	lbs	kg/cm ²	psi
16.9-24	12	T/L	L-3	76m	10 km/h	15.00	1340	52.8	454	17.9	27.0	34.0	3780	8330	2.80	40

TT = TUBE TYPE / TL = TUBELESS

655



432



640S



655

SIZE	PR	TUBE TYPE	TRA CODE	One Way Distance	SPEED	R.W.	O.D.		S.W.		TREAD DEPTH		MAX. LOAD		INFLATION	
							mm	inch	mm	inch	mm	x/32"	kg	lbs	kg/cm ²	psi
26.5-25	28	T/L	L-5	76m	10km/h	22.00	1805	71.1	686	27.0	98.0	123.5	15500	34100	4.75	68
	32	T/L	L-5	76m	10km/h	22.00	1805	71.1	686	27.0	98.0	123.5	17000	37500	5.50	78

432

SIZE	PR	TUBE TYPE	TRA CODE	One Way Distance	SPEED	R.W.	O.D.		S.W.		TREAD DEPTH		MAX. LOAD		INFLATION	
							mm	inch	mm	inch	mm	x/32"	kg	lbs	kg/cm ²	psi
29.5 -25	28	T/L	L-5	76m	10km/h	25.00	1930	76.0	772	30.4	105.0	132.3	17500	38600	4.25	60
	34	T/L	L-5	76m	10km/h	25.00	1930	76.0	772	30.4	105.0	132.3	20000	44100	5.25	75
35/65-33	42	T/L	L-5	76m	10km/h	28.00	2105	82.9	890	35.0	100.0	126.0	25750	56770	6.00	85
	48	T/L	L-5	76m	10km/h	28.00	2105	82.9	890	35.0	100.0	126.0	28200	62170	7.00	100
	42	T/L	L-4	76m	10km/h	28.00	2100	82.7	900	35.4	63.0	79.4	25750	56770	6.30	90

640S

SIZE	PR	TUBE TYPE	TRA CODE	One Way Distance	SPEED	R.W.	O.D.		S.W.		TREAD DEPTH		MAX. LOAD		INFLATION	
							mm	inch	mm	inch	mm	x/32"	kg	lbs	kg/cm ²	psi
26.5-25	36	T/L	L-5S	76m	10km/h	22.00	1805	71.1	680	26.8	100.0	126.0	17900	39500	6.30	90
29.5-25	34	T/L	L-5S	76m	10km/h	25.00	1930	76.0	750	29.5	98.0	123.5	20000	44100	5.25	75
29.5-29	40	T/L	L-5S	76m	10km/h	25.00	2023	79.6	760	29.9	103.0	129.8	23600	52000	6.25	89

TT = TUBE TYPE / TL = TUBELESS



LOADER · DOZER / TIPPER · DUMP TRUCK

641S



405B



669



641S

SIZE	PR	TUBE TYPE	TRA CODE	One Way Distance	SPEED	R.W.	O.D.		S.W.		TREAD DEPTH		MAX.LOAD		INFLATION	
							mm	inch	mm	inch	mm	x/32"	kg	lbs	kg/cm ²	psi
35/65-33	42	T/L	L-5S	76m	10km/h	28.00	2075	81.7	890	35.0	98.0	123.5	26500	58400	6.25	89

405B

SIZE	PR	TUBE TYPE	TRA CODE	One Way Distance	SPEED	R.W.	O.D.		S.W.		TREAD DEPTH		MAX.LOAD		INFLATION	
							mm	inch	mm	inch	mm	x/32"	kg	lbs	kg/cm ²	psi
17.5-25	12	T/L	L-2	76m	40km/h	14.00	1345	53.0	348	13.7	27.0	34.0	6150	13500	3.50	50

> TIPPER · DUMP TRUCK

669

SIZE	PR	TUBE TYPE	TRA CODE	SPEED	R.W.	O.D.		S.W.		TREAD DEPTH		MAX.LOAD		INFLATION	
						mm	inch	mm	inch	mm	x/32"	kg	lbs	kg/cm ²	psi
12.00-24	24	T/T	E-4	50km/h	8.50	1247	49.1	320	12.6	32.0	40.3	4130	9110	6.60	94

TT = TUBE TYPE / TL = TUBELESS



RIGID DUMPER

407



ML



660



CONSTRUCTION / INDUSTRIAL APPLICATION

LOADER · DOZER / TIPPER · DUMP TRUCK / RIGID DUMPER

> RIGID DUMPER

407

SIZE	PR	TUBE TYPE	TRA CODE	One Way Distance	SPEED	R.W.	O.D.		S.W.		TREAD DEPTH		MAX.LOAD		INFLATION	
							mm	inch	mm	inch	mm	x/32"	kg	lbs	kg/cm ²	psi
14.00-25	20	T/T	E-3	4km	50km/h	10.00	1365	53.7	395	15.6	30.0	37.8	4600	10100	5.00	71
	24	T/L	E-3	4km	50km/h	10.00	1365	53.7	395	15.6	30.0	37.8	5100	11200	5.75	82
	28	T/L	E-3	4km	50km/h	10.00	1365	53.7	395	15.6	30.0	37.8	5600	12300	6.50	92
16.00-25	28	T/L	E-3	4km	50km/h	11.25	1502	59.1	445	17.5	34.0	42.8	6700	14700	5.75	82
	32	T/L	E-3	4km	50km/h	11.25	1502	59.1	445	17.5	34.0	42.8	7300	16100	6.50	92
18.00-25	32	T/L	E-3	4km	50km/h	13.00	1627	64.1	510	20.1	39.0	49.1	8700	19100	5.75	82
	36	T/L	E-3	4km	50km/h	13.00	1627	64.1	510	20.1	39.0	49.1	9200	20200	6.25	89
	40	T/L	E-3	4km	50km/h	13.00	1627	64.1	510	20.1	39.0	49.1	9700	21500	7.00	100
18.00-33	28	T/L	E-4	4km	50km/h	13.00	1868	73.5	503	19.8	58.0	73.1	9250	20400	5.00	73
	32	T/L	E-4	4km	50km/h	13.00	1868	73.5	503	19.8	58.0	73.1	10000	22000	5.75	82
	36	T/L	E-4	4km	50km/h	13.00	1868	73.5	503	19.8	58.0	73.1	10600	23300	6.25	89
40	T/L	E-4	4km	50km/h	13.00	1868	73.5	503	19.8	58.0	73.1	11100	24470	6.75	96	
24.00-35	42	T/L	E-3	4km	50km/h	17.00	2127	83.7	650	25.6	46.0	58.0	16500	36500	5.50	78

ML

SIZE	PR	TUBE TYPE	TRA CODE	One Way Distance	SPEED	R.W.	O.D.		S.W.		TREAD DEPTH		MAX.LOAD		INFLATION	
							mm	inch	mm	inch	mm	x/32"	kg	lbs	kg/cm ²	psi
18.00-33	32	T/L	E-3	4km	50km/h	13.00	1820	71.7	498	19.6	40.7	51.3	10000	22045	5.75	82
	36	T/L	E-3	4km	50km/h	13.00	1820	71.7	498	19.6	40.7	51.3	10600	23370	6.25	89

660

SIZE	PR	TUBE TYPE	TRA CODE	SPEED	R.W.	O.D.		S.W.		TREAD DEPTH		MAX.LOAD		INFLATION	
						mm	inch	mm	inch	mm	x/32"	kg	lbs	kg/cm ²	psi
14.00-25	36	T/T	E-4	50km/h	10.00	1413	55.6	391	15.4	50.0	63.0	6300	13890	8.00	114

TT = TUBE TYPE / TL = TUBELESS



EXCAVATOR

676

653

T2A

423



> EXCAVATOR

676

SIZE	PR	TUBE TYPE	TRA CODE	SPEED	R.W.	O.D.		S.W.		TREAD DEPTH		MAX.LOAD		INFLATION	
						mm	inch	mm	inch	mm	x/32"	kg	lbs	kg/cm ²	psi
9.00-20	14	T/T	L-2	10km/h	7.00	1020	40.2	265	10.4	22.0	27.7	3885	8560	7.00	100

653

SIZE	PR	TUBE TYPE	TRA CODE	One Way Distance	SPEED	R.W.	O.D.		S.W.		TREAD DEPTH		MAX.LOAD		INFLATION	
							mm	inch	mm	inch	mm	x/32"	kg	lbs	kg/cm ²	psi
9.00-20	14	T/T	L-2	76m	10km/h	7.00	1020	40.2	257	10.1	20.0	25.2	3885	8600	7.00	99
10.00-20	14	T/T	L-2	76m	10km/h	7.50	1062	41.8	275	10.8	21.5	27.1	4305	9500	6.75	96
	16	T/T	L-2	76m	10km/h	7.50	1062	41.8	275	10.8	21.5	27.1	4580	10100	7.50	107

T2A

SIZE	PR	TUBE TYPE	TRA CODE	One Way Distance	SPEED	R.W.	O.D.		S.W.		TREAD DEPTH		MAX.LOAD		INFLATION	
							mm	inch	mm	inch	mm	x/32"	kg	lbs	kg/cm ²	psi
9.00-20	14	T/T	L-2	76m	10km/h	7.00	1027	40.4	260	10.2	19.3	24.3	3885	8560	7.00	100
10.00-20	14	T/T	L-2	76m	10km/h	7.50	1070	42.1	277	10.9	19.5	24.6	4305	9490	6.75	96

423

SIZE	PR	TUBE TYPE	TRA CODE	One Way Distance	SPEED	R.W.	O.D.		S.W.		TREAD DEPTH		MAX.LOAD		INFLATION	
							mm	inch	mm	inch	mm	x/32"	kg	lbs	kg/cm ²	psi
9.00-20	14	T/T	L-2	76m	10km/h	7.00T	1018	40.0	251	9.8	20.0	25.2	4000	8800	7.40	105
10.00-20	14	T/T	L-2	76m	10km/h	7.50V	1058	41.6	268	10.5	23.0	29.0	2060	4550	4.25	60
	16	T/T	L-2	76m	10km/h	7.50V	1058	41.6	268	10.5	23.0	29.0	2260	4980	4.92	70

TT = TUBE TYPE / TL = TUBELESS



GRADER

407



405B



CONSTRUCTION / INDUSTRIAL APPLICATION
EXCAVATOR / GRADER

> **GRADER**

407

SIZE	PR	TUBE TYPE	TRA CODE	One Way Distance	SPEED	R.W.	O.D.		S.W.		TREAD DEPTH		MAX.LOAD		INFLATION	
							mm	inch	mm	inch	mm	x/32"	kg	lbs	kg/cm ²	psi
16.00-24	20	T/T	G-3	Unlimited	40km/h	10.00	1502	59.1	445	17.5	34.0	42.8	5000	11000	4.00	57

405B

SIZE	PR	TUBE TYPE	TRA CODE	One Way Distance	SPEED	R.W.	O.D.		S.W.		TREAD DEPTH		MAX.LOAD		INFLATION	
							mm	inch	mm	inch	mm	x/32"	kg	lbs	kg/cm ²	psi
13.00-24	16	T/T	G-2	Unlimited	40km/h	8.00	1280	50.4	356	14.0	31.5	39.7	3000	6600	3.50	50
14.00-24	12	T/L	G-2	Unlimited	40km/h	8.00	1340	52.8	375	14.8	31.2	39.3	3000	6600	2.50	35
	16	T/L	G-2	Unlimited	40km/h	8.00	1340	52.8	375	14.8	31.2	39.3	3500	7700	3.20	45

TT = TUBE TYPE / TL = TUBELESS



SKID STEER LOADER

675

610

656



> SKID STEER LOADER

675

***DEEP TREAD**

SIZE	PR	TUBE TYPE	TRA CODE	One Way Distance	SPEED	R.W.	O.D.		S.W.		TREAD DEPTH		MAX.LOAD		INFLATION	
							mm	inch	mm	inch	mm	x/32"	kg	lbs	kg/cm ²	psi
12-16.5	14	T/L	L-5	76m	10km/h	9.75	845	33.3	315	12.4	37.0	46.6	2865	6320	5.60	80

*10-16.5 _ TO BE READY IN THE NEAR FUTURE

610

SIZE	PR	TUBE TYPE	TRA CODE	One Way Distance	SPEED	R.W.	O.D.		S.W.		TREAD DEPTH		MAX.LOAD		INFLATION	
							mm	inch	mm	inch	mm	x/32"	kg	lbs	kg/cm ²	psi
14-17.5	14	T/L	R-4	76m	10km/h	10.50	937	36.9	356	14.0	19.0	23.9	3875	8540	5.60	80

656

SIZE	PR	TUBE TYPE	TRA CODE	One Way Distance	SPEED	R.W.	O.D.		S.W.		TREAD DEPTH		MAX.LOAD		INFLATION	
							mm	inch	mm	inch	mm	x/32"	kg	lbs	kg/cm ²	psi
10-16.5	6	T/L	L-2	76m	10km/h	8.25	780	30.7	273	10.7	20.0	25.2	1610	3550	3.25	46
	8	T/L	L-2	76m	10km/h	8.25	780	30.7	273	10.7	20.0	25.2	1820	4010	4.00	57
12-16.5	12	T/L	L-2	76m	10km/h	9.75	845	33.3	314	12.4	20.0	25.2	2800	6200	5.28	75
	14	T/L	L-2	76m	10km/h	9.75	845	33.3	314	12.4	20.0	25.2	3075	6780	6.30	90

TT = TUBE TYPE / TL = TUBELESS

667



405B



Q



667

***LONG MILEAGE**

SIZE	PR	TUBE TYPE	TRA CODE	One Way Distance	SPEED	R.W.	O.D.		S.W.		TREAD DEPTH		MAX.LOAD		INFLATION	
							mm	inch	mm	inch	mm	x/32"	kg	lbs	kg/cm ²	psi
12-16.5	12	T/L	L-2	76m	10km/h	9.75	842	33.1	325	12.8	25.0	31.5	2865	6320	5.60	80

405B

SIZE	PR	TUBE TYPE	TRA CODE	One Way Distance	SPEED	R.W.	O.D.		S.W.		TREAD DEPTH		MAX.LOAD		INFLATION	
							mm	inch	mm	inch	mm	x/32"	kg	lbs	kg/cm ²	psi
10-16.5	6	T/L	L-2	76m	10km/h	8.25	780	30.7	273	10.7	20.0	25.2	1600	3500	3.20	45
	8	T/L	L-2	76m	10km/h	8.28	780	30.7	273	10.7	20.0	25.2	1900	4100	4.25	60
12-16.5	8	T/L	L-2	76m	10km/h	9.75	845	33.3	305	12.0	20.0	25.2	2200	4800	3.50	50
	10	T/L	L-2	76m	10km/h	9.75	845	33.3	305	12.0	20.0	25.2	2500	5600	4.50	65
	12	T/L	L-2	76m	10km/h	9.75	845	33.3	305	12.0	20.0	25.2	2800	6100	5.25	75

Q

SIZE	PR	TUBE TYPE	TRA CODE	One Way Distance	SPEED	R.W.	O.D.		S.W.		TREAD DEPTH		MAX.LOAD		INFLATION	
							mm	inch	mm	inch	mm	x/32"	kg	lbs	kg/cm ²	psi
10-16.5	6	TL	L-2	76m	10km/h	8.25	775	30.5	266	10.5	18.8	23.7	1588	3500	3.20	45
12-16.5	12	TL	L-2	76m	10km/h	9.75	840	33.1	310	12.2	19.1	24.1	2750	6065	5.25	75

TT = TUBE TYPE / TL = TUBELESS



BACKHOE LOADER / COMPACT LOADER / COMPACTOR

668

651

610



NEW

> BACKHOE LOADER

668

SIZE	PR	TUBE TYPE	TRA CODE	SPEED	R.W.	O.D.		S.W.		TREAD DEPTH		MAX.LOAD		INFLATION	
						mm	inch	mm	inch	mm	x/32"	kg	lbs	kg/cm ²	psi
* 12.5/80-18	12	T/L	R-4	10km/h	9.00	975	38.4	315	12.4	24.0	30.2	3780	8330	2.80	40
* 16.9-28	12	T/L	R-4	10km/h	15.00	1417	55.8	440	17.3	25.0	31.5	3780	8330	2.80	40

* TO BE READY IN THE NEAR FUTURE

651

SIZE	PR	TUBE TYPE	TRA CODE	SPEED	R.W.	O.D.		S.W.		TREAD DEPTH		MAX.LOAD		INFLATION	
						mm	inch	mm	inch	mm	x/32"	kg	lbs	kg/cm ²	psi
16.9-24	12	T/L	L-3	10km/h	15.00	1340	52.8	454	17.9	27.0	34.0	3780	8330	2.80	40

610

SIZE	PR	TUBE TYPE	TRA CODE	SPEED	R.W.	O.D.		S.W.		TREAD DEPTH		MAX.LOAD		INFLATION	
						mm	inch	mm	inch	mm	x/32"	kg	lbs	kg/cm ²	psi
16.9-24	10	T/L	R-4	10km/h	W15L	1313	51.7	442	17.4	27.0	34.0	2900	6390	2.25	32
	12	T/L	R-4	10km/h	W15L	1313	51.7	442	17.4	27.0	34.0	3250	7160	2.65	38
17.5L-24	12	T/L	R-4	10km/h	W15L	1241	48.9	445	17.5	26.0	32.8	3000	6610	2.55	36
19.5L-24	12	T/L	R-4	10km/h	W16L	1314	51.7	480	18.9	26.5	33.4	3450	7600	2.40	34

TT = TUBE TYPE / TL = TUBELESS



668

DM

663S

RR4



> COMPACT LOADER

668

SIZE	PR	TUBE TYPE	TRA CODE	SPEED	R.W.	O.D.		S.W.		TREAD DEPTH		MAX.LOAD		INFLATION	
						mm	inch	mm	inch	mm	x/32"	kg	lbs	kg/cm ²	psi
15.5/60-18	8	T/L	L-2	10km/h	13.00	932	36.7	398	15.7	21.5	27.1	1910	4210	2.20	31
*16/70-20	14	T/L	L-2	10km/h	14.00	1095	43.1	410	16.1	25.0	31.5	3750	8270	4.90	70
17.5/65-20	10	T/L	L-2	10km/h	14.00	1107	43.6	450	17.7	25.0	31.5	3195	4210	2.40	34

* TO BE READY IN THE NEAR FUTURE

> COMPACTOR

DM

SIZE	PR	TUBE TYPE	TRA CODE	One Way Distance	SPEED	R.W.	O.D.		S.W.		TREAD DEPTH		MAX.LOAD		INFLATION	
							mm	inch	mm	inch	mm	x/32"	kg	lbs	kg/cm ²	psi
23.1-26	8	T/L	R-3	Unlimited	40km/h	DW20A	1570	61.8	590	23.2	27.2	34.3	2575	5680	1.10	16
	12	T/L	R-3	Unlimited	40km/h	DW20A	1570	61.8	590	23.2	27.2	34.3	3250	7150	1.70	24

663S

SIZE	PR	TUBE TYPE	STANDARD RIM	APPROVED RIM	O.D.		S.W.		MAX.LOAD			INFLATION	
					mm	inch	mm	inch	usage	kg	lbs	kg/cm ²	psi
7.50-16	10	T/T	6.0	-	783	30.8	216	8.5	S	2400	5290	6.00	85

RR4

SIZE	PR	TUBE TYPE	STANDARD RIM	APPROVED RIM	O.D.		S.W.		MAX.LOAD			INFLATION	
					mm	inch	mm	inch	usage	kg	lbs	kg/cm ²	psi
9.00-20	14	T/T	7.00	7.50	1011	39.8	260	10.2	-	4420	9745	7.40	105

TT = TUBE TYPE / TL = TUBELESS



FORKLIFT



EXTRA DEEP TREAD



SIDEWALL PROTECTION



DURABILITY

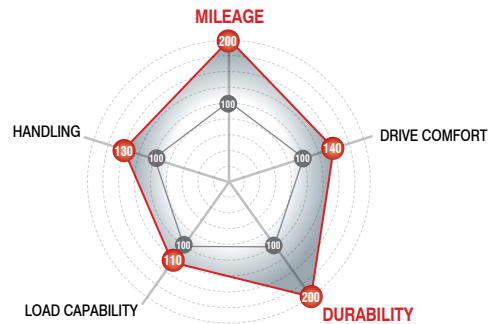
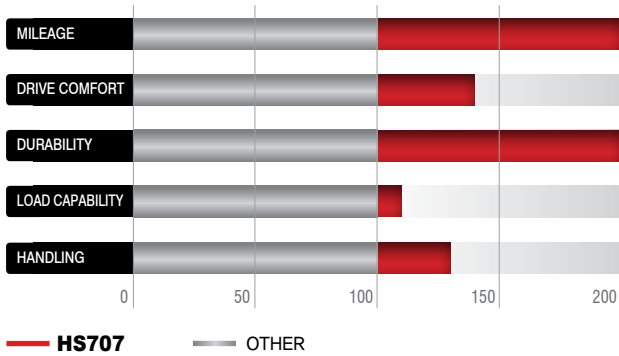
HS707

**SUPER MILEAGE
AND PERFORMANCE
EXCLUSIVELY
FORKLIFT**





PERFORMANCE RESULT



TECHNOLOGY

LONGER LIFE



Widen patter design provides increasing contact area to gain superior wear resistance

SPECIAL PATTERN DESIGN

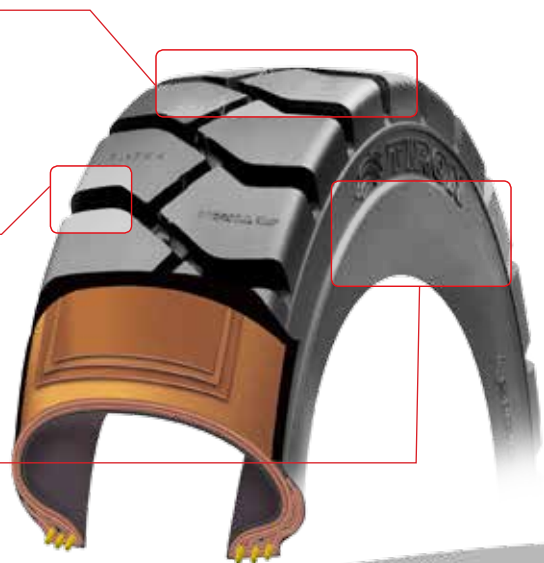


To strengthen pattern rigidity when steering And driving reinforced TIE-BAR is applied in center and shoulder area

SUPERIOR SIDE PROTECTOR



Strong resistance from external shock by applying strong side protector





707

701



> FORKLIFT

707

SIZE	PR	TUBE TYPE	STANDARD RIM	O.D.		S.W.		TREAD DEPTH		STATIC LOADED RADIUS (±1.5%)		MAX. LOAD		INFLATION	
				mm	inch	mm	inch	mm	x/32"	mm	inch	kg	lbs	kg/cm ²	psi
6.50-10	10	T/T	5.00	599	23.6	185	7.3	31.0	39.1	269	10.6	1915	4222	8.00	114
	12	T/T	5.00	599	23.6	185	7.3	31.0	39.1	269	10.6	2095	4619	9.00	128
7.00-12	12	T/T	5.00	680	26.8	200	7.9	33.5	42.2	311	12.2	2775	6118	8.50	121
	14	T/T	5.00	680	26.8	200	7.9	33.5	42.2	311	12.2	3085	6801	10.00	142
7.00-15	12	T/T	5.50	746	29.4	210	8.3	33.5	42.2	344	13.5	3140	6920	8.25	117
8.15-15	12	T/T	7.00	710	28.0	224	8.8	27.0	34.0	329	13.0	2910	6420	7.00	99
	14	T/T	7.00	710	28.0	224	8.8	27.0	34.0	329	13.0	3145	6930	8.00	114
8.25-15	14	T/T	6.50	851	33.5	246	9.7	33.5	42.2	383	15.1	4170	9193	8.00	114
	16	T/T	6.50	851	33.5	246	9.7	33.5	42.2	383	15.1	4470	9854	9.00	128
7.50-16	12	T/T	6.00	820	32.3	222	8.7	33.5	42.2	375	14.8	3545	7815	8.00	114
	14	T/T	6.00	820	32.3	222	8.7	33.5	42.2	375	14.8	3870	8532	9.00	128

701

SIZE	PR	TUBE TYPE	STANDARD RIM	O.D.		S.W.		TREAD DEPTH		STATIC LOADED RADIUS (±1.5%)		MAX. LOAD		INFLATION	
				mm	inch	mm	inch	mm	x/32"	mm	inch	kg	lbs	kg/cm ²	psi
6.50-10	10	T/T	5.00F	600	23.6	184	7.2	18.9	23.8	270	10.6	1915	4222	8.00	114
	12	T/T	5.00F	600	23.6	184	7.2	18.9	23.8	270	10.6	2095	4619	9.00	128
7.50-16	12	T/T	6.00GS	809	31.9	212	8.4	20.4	25.7	371	14.6	3545	7815	7.75	110
	14	T/T	6.00GS	809	31.9	212	8.3	20.4	26.0	371	14.6	3870	8532	9.00	128

TT = TUBE TYPE / TL = TUBELESS

704



704

SIZE	PR	TUBE TYPE	STANDARD RIM	O.D.		S.W.		TREAD DEPTH		STATIC LOADED RADIUS (±1.5%)		MAX. LOAD		INFLATION	
				mm	inch	mm	inch	mm	x/32"	mm	inch	kg	lbs	kg/cm ²	psi
5.00-8	8	T/T	3.50	470	18.5	138	5.4	15.5	19.5	212	8.3	1215	2679	8.00	114
	10	T/T	3.50	470	18.5	138	5.4	15.5	19.5	212	8.3	1305	2877	9.00	128
6.00-9	10	T/T	4.00	535	21.1	168	6.6	21.0	26.5	243	9.6	1730	3814	8.50	121
6.50-10	10	T/T	5.00	599	23.6	195	7.7	22.5	28.3	267	10.5	1915	4222	8.00	114
	12	T/T	5.00	599	23.6	195	7.7	22.5	28.3	267	10.5	2095	4619	9.00	128
7.00-12	12	T/T	5.00	670	26.4	198	7.8	21.5	27.1	306	12.0	2775	6118	8.50	121
	14	T/T	5.00	670	26.4	198	7.8	21.5	27.1	306	12.0	3085	6801	10.00	142
7.00-15	12	T/T	5.50	746	29.4	203	8.0	21.0	26.5	344	13.5	3140	6922	8.25	117
7.50-15	12	T/T	6.00	780	30.7	218	8.6	22.0	27.7	355	14.0	3395	7485	7.75	110
8.15-15	12	T/T	7.00	710	28.0	220	8.7	17.5	22.0	329	13.0	2910	6415	7.00	99
	14	T/T	7.00	710	28.0	220	8.7	17.5	22.0	329	13.0	3145	6933	8.00	114
8.25-15	14	T/T	6.50	830	32.7	240	9.4	20.0	25.2	382	15.0	4170	9193	8.00	114
	16	T/T	6.50	830	32.7	240	9.4	20.0	25.2	382	15.0	4470	9854	9.00	128
250/8.15-15	18	T/T	7.50	745	29.3	220	8.7	21.0	26.5	339	13.3	4090	9017	9.00	128
300-15	18	T/T	8.00	848	33.4	298	11.7	25.0	31.5	383	15.1	5900	13007	8.00	114
7.50-16	12	T/T	6.00	808	31.8	212	8.3	22.0	27.7	373	14.7	3545	7815	7.75	110
	14	T/T	6.00	808	31.8	212	8.3	22.0	27.7	373	14.7	3870	8532	9.00	128

TT = TUBE TYPE / TL = TUBELESS



708⁸

T14



708

***IND-RADIAL**

SIZE	PR	TUBE TYPE	STANDARD RIM	O.D.		S.W.		TREAD DEPTH		STATIC LOADED RADIUS (±1.5%)		MAX. LOAD		INFLATION	
				mm	inch	mm	inch	mm	x/32"	mm	inch	kg	lbs	kg/cm ²	psi
7.50R16	-	T/L	6.00	800	31.5	212	8.3	30.0	37.8	361	14.2	3965	8741	10.00	145
8.25R15	-	T/L	6.50	836	32.9	242	9.5	32.0	40.3	380	15.0	4745	10461	10.00	145

T14

SIZE	PR	TUBE TYPE	STANDARD RIM	O.D.		S.W.		TREAD DEPTH		STATIC LOADED RADIUS (±1.5%)		MAX. LOAD		INFLATION	
				mm	inch	mm	inch	mm	x/32"	mm	inch	kg	lbs	kg/cm ²	psi
7.00-15	12	TT	5.50	742	29.2	205	8.1	20.0	25.2	344	13.5	3140	6922	8.25	117
7.50-15	14	TT	6.00	770	30.3	210	8.3	20.4	25.7	355	14.0	3395	7485	7.75	110
8.15-15	12	TT	6.00	720	28.3	220	8.7	18.0	22.7	355	14.0	2910	6415	7.00	99
	14	TT	6.00	720	28.3	220	8.7	18.0	22.7	355	14.0	3145	6933	8.00	114
8.25-15	14	TT	6.00	840	33.1	235	9.3	21.5	27.1	355	14.0	4170	9193	8.00	114
	16	TT	6.00	840	33.1	235	9.3	21.5	27.1	355	14.0	4470	9854	9.00	128

TT = TUBE TYPE / TL = TUBELESS

354A



354A

SIZE	PR	TUBE TYPE	STANDARD RIM	O.D.		S.W.		TREAD DEPTH		STATIC LOADED RADIUS (±1.5%)		MAX. LOAD		INFLATION	
				mm	inch	mm	inch	mm	x/32"	mm	inch	kg	lbs	kg/cm ²	psi
6.00-9	10	T/T	4.00	535	21.1	160	6.3	21.0	26.5	243	9.6	1730	3814	8.50	121
6.50-10	10	T/T	5.00	588	23.1	177	7.0	22.0	27.7	267	10.5	1915	4222	8.00	114
	12	T/T	5.00	588	23.1	177	7.0	22.0	27.7	267	10.5	2095	4619	9.00	128
7.00-12	12	T/T	5.00	670	26.4	192	7.6	22.0	27.1	306	12.0	2775	6118	8.50	121
	14	T/T	5.00	670	26.4	192	7.6	22.0	27.1	306	12.0	3085	6801	10.00	142
300-15	18	T/T	8.00	840	33.1	300	11.8	25.0	31.5	383	15.1	5900	13007	8.00	114
6.00-15	10	T/T	4.50	700	27.6	165	6.5	22.0	29.7	325	12.8	2355	5192	8.25	117
7.00-15	12	T/T	5.50	746	29.4	197	7.8	21.0	26.5	344	13.5	3140	6922	8.25	117
250/8.15-15	16	T/T	7.50	743	29.3	229	9.0	21.5	27	339	13.3	3950	8708	8.50	121
	18	T/T	7.50	743	29.3	229	9.0	21.5	27	339	13.3	4090	9017	9.00	128
7.50-15	12	T/T	6.00	773	30.4	212	8.3	21.0	26.5	355	14.0	3395	7485	7.75	110
8.15-15	12	T/T	7.00	713	28.1	218	8.6	18.0	22.9	326	12.8	2910	6415	7.00	99
	14	T/T	7.00	713	28.1	218	8.6	18.0	22.9	326	12.8	3145	6933	8.00	114
	16	T/T	7.00	713	28.1	218	8.6	18.0	22.9	326	12.8	3400	7496	9.00	128
28X9-15	12	T/T	7.00	713	28.1	218	8.6	18.0	22.9	326	12.8	2910	6415	7.00	99
	14	T/T	7.00	713	28.1	218	8.6	18.0	22.9	326	12.8	3145	6933	8.00	114
	16	T/T	7.00	713	28.1	218	8.6	18.0	22.9	326	12.8	3400	7496	9.00	128
8.25-15	12	T/T	6.50	836	32.9	234	9.2	22.0	27.1	382	15.0	3860	8510	7.00	99
	14	T/T	6.50	836	32.9	234	9.2	22.0	27.1	382	15.0	4170	9193	8.00	114
	16	T/T	6.50	836	32.9	234	9.2	22.0	27.1	382	15.0	4470	9854	9.00	128

TT = TUBE TYPE / TL = TUBELESS



FORKLIFT



705

SIZE	PR	TUBE TYPE	STANDARD RIM	O.D.		S.W.		TREAD DEPTH		STATIC LOADED RADIUS (±1.5%)		MAX. LOAD		INFLATION	
				mm	inch	mm	inch	mm	x/32"	mm	inch	kg	lbs	kg/cm ²	psi
9.00-20	14	T/T	7.00	1025	40.4	255	10.0	28.0	35.3	468	18.4	4155	9160	7.50	107
10.00-20	16	T/T	7.50	1078	42.4	276	10.9	29.5	37.2	482	19.0	4875	10747	8.00	114
12.00-20	18	T/T	8.50	1135	44.7	310	12.2	30.0	37.8	512	20.2	6070	13382	8.00	114
	20	T/T	8.50	1135	44.7	310	12.2	30.0	37.8	512	20.2	6500	14330	9.20	131

709

SIZE	PR	TUBE TYPE	STANDARD RIM	O.D.		S.W.		TREAD DEPTH		STATIC LOADED RADIUS (±1.5%)		MAX. LOAD		INFLATION	
				mm	inch	mm	inch	mm	x/32"	mm	inch	kg	lbs	kg/cm ²	psi
11.00-20	16	T/T	8.00	1110	43.7	294	11.6	30.0	37.8	508	20.0	7235	15950	7.75	110

431

SIZE	PR	TUBE TYPE	STANDARD RIM	O.D.		S.W.		TREAD DEPTH		MAX. LOAD			INFLATION	
				mm	inch	mm	inch	mm	x/32"	usage	kg	lbs	kg/cm ²	psi
10.00-20	16	T/T	7.50V	1085	42.7	278	10.9	29.0	36.5	-	2640	5810	7.65	105
11.00-20	16	T/T	8.00V	1100	43.3	293	11.5	30.5	38.4	-	2870	6330	7.65	105
	18	T/T	8.00V	1100	43.3	293	11.5	30.5	38.4	S	3520	7770	9.05	130
										D	3100	6820	8.25	120
12.00-20	18	T/T	8.50V	1135	44.7	312	12.3	31.0	39.1	-	3270	7200	7.30	105

TT = TUBE TYPE / TL = TUBELESS

654



654

SIZE	PR	TUBE TYPE	TRA CODE	One Way Distance	SPEED	R.W.	O.D.		S.W.		TREAD DEPTH		MAX. LOAD		INFLATION	
							mm	inch	mm	inch	mm	x/32"	kg	lbs	kg/cm ²	psi
14.00-24	28	T/T	E-3	4km	50km/h	10.00	1360	53.5	380	15.0	28.0	35.3	5600	12300	6.50	92
		T/L	E-3	4km	50km/h	10.00	1360	53.5	380	15.0	28.0	35.3	5600	12300	6.50	92
	32	T/T	E-3	4km	50km/h	10.00	1360	53.5	380	15.0	28.0	35.3	5950	13100	7.25	103
		T/L	E-3	4km	50km/h	10.00	1360	53.5	380	15.0	28.0	35.3	5950	13100	7.25	103
14.00-25	28	T/L	E-3	4km	50km/h	10.00	1360	53.5	380	15.0	28.0	35.3	5600	12300	6.50	92
	32	T/L	E-3	4km	50km/h	10.00	1360	53.5	380	15.0	28.0	35.3	5950	13100	7.25	103

TT = TUBE TYPE / TL = TUBELESS



77, Eosil-ro, Yangsan-si
Gyeongsangnam-do, Korea
T 82-55-371-3731, 3734, 3735, 3785
F 82-55-366-4700
www.hunga.com/eng